

Paua Industry Council
**MEDIUM TERM
RESEARCH
PLAN**



PICL has won the Mfish contract to produce a MTRP for paua.

In consultation with scientists, fisheries managers and key industry players, 2 objectives have been established and possible components of these identified.

This is your chance to help shape the
MTRP

Objective 1

Objective 1

To move from the current “set period” stock assessments to a system that determines if and when an assessment is required.

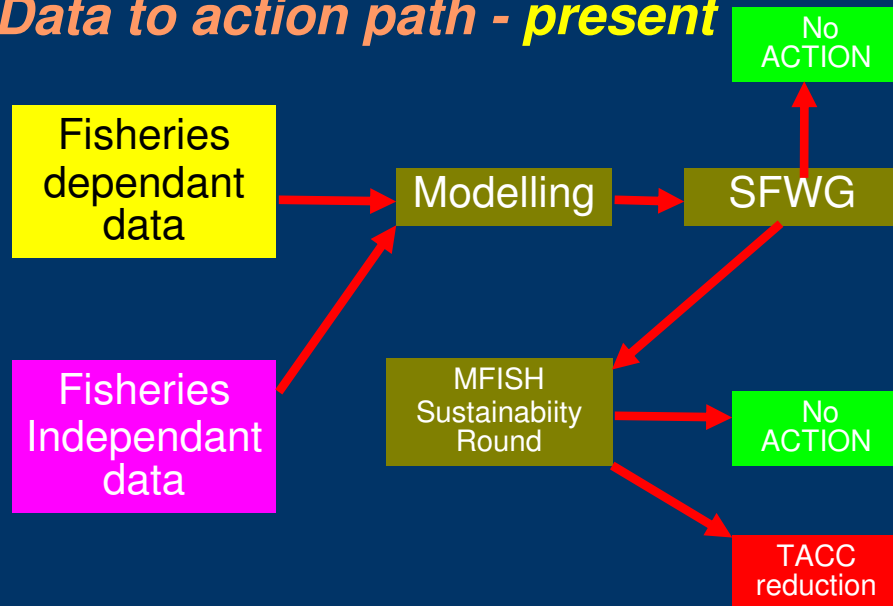
Within 5 years we want to have in place an efficient system of indicators and decision rules that either:

- (1) Show the stock is in good shape.*
 - (2) Determine required management actions*
 - (3) Prompt a closer look at the science*
 - (4) Or trigger a stock assessment*
-
-

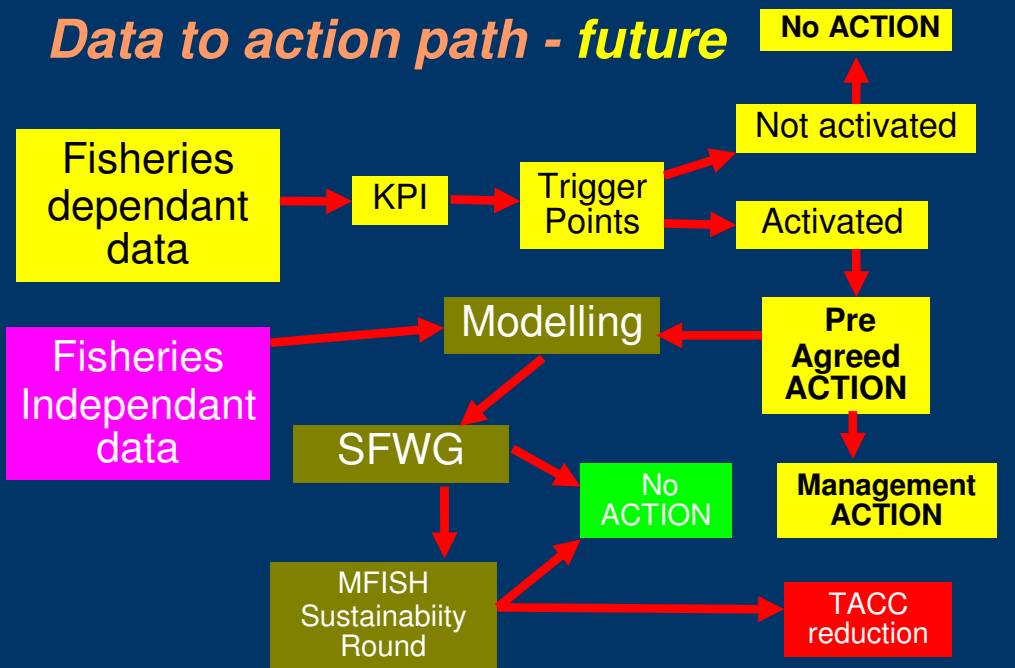
Objective 1 – what is required

- **Developing the Key Performance Indicators (KPI's)** e.g. mean length, Catch, Effort, CPUE, kgs/ha/hr etc.
- **Developing the trigger points** e.g. if mean length or CPUE drops below or rises above a predetermined level (expressed as a comparison to historical reference years).
- **Developing the agreed actions if KPI trigger points are exceeded** e.g. increase or decrease catch limits / size limits, implement enhancement, closures etc to small spatial areas – reef / bay / MMZ etc.

Data to action path - present



Data to action path - future



Objective 2

Objective 2 of the MTRP is about:

- Developing projects that demonstrate
 - how paua fisheries can be better **managed** at a finer scale
 - how to increase the **utilisation** of paua fisheries.
 - how to ensure **sustainability** of paua fisheries.

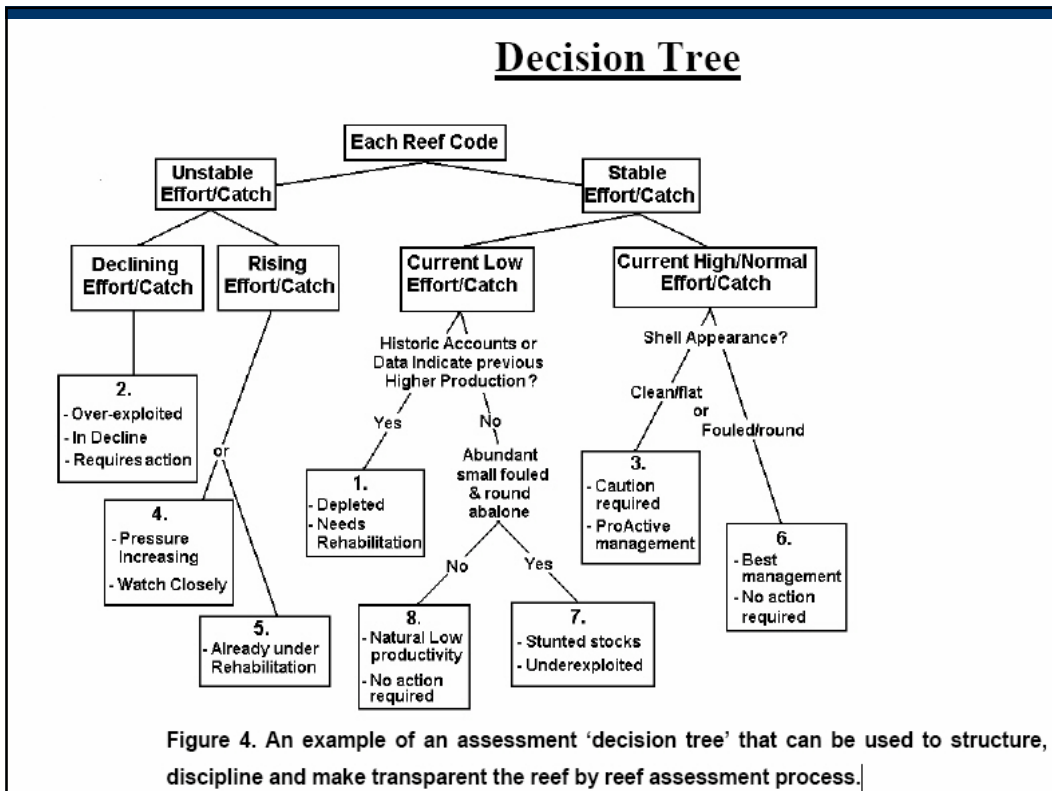


Figure 4. An example of an assessment 'decision tree' that can be used to structure, discipline and make transparent the reef by reef assessment process.