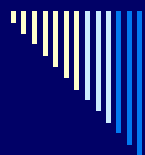


# PAU3

**Voluntary subdivision**

---

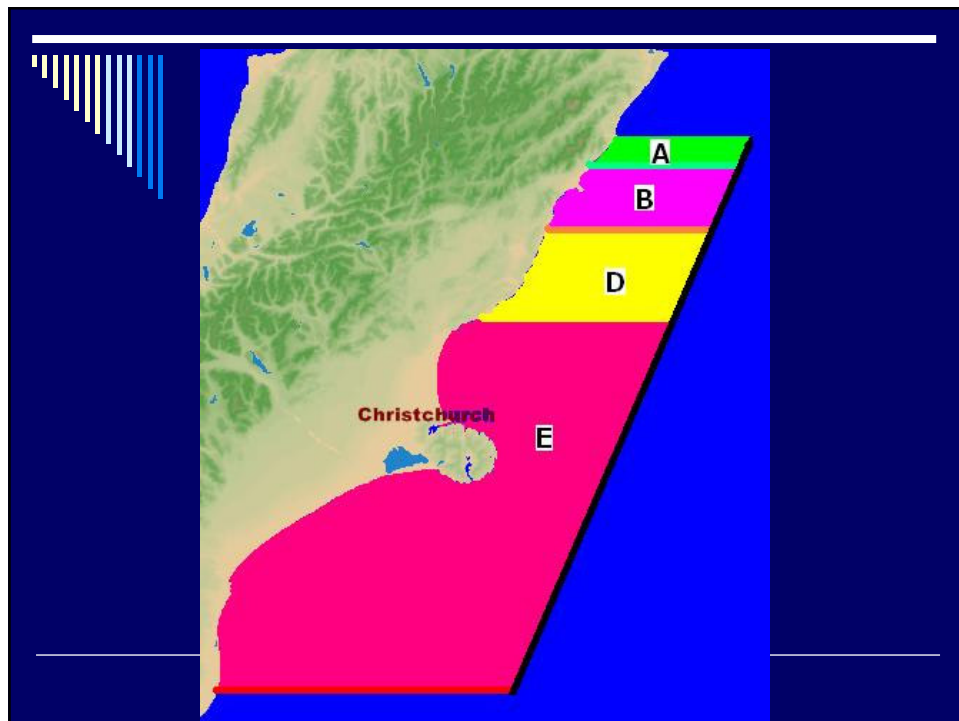


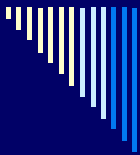
## The reason (pre 2001)

- ❑ The northern areas of Pau3 were being over fished (easy accessibility).
  - ❑ Catch rates in the Nth areas were dropping.
  - ❑ Fishers were not going to Sth parts of the fishery.
  - ❑ The industry agreed to spread catch effort by voluntary subdivision.
-

## The mechanism

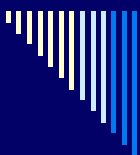
- Pau3 was subdivided into 4 zones (reflecting fishing potential not length of coastline).





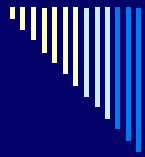
## The mechanism (Continued)

- The % of Pau3 ACE that could be caught in each zone was agreed to.
- No formal contracts entered into (but history has shown 98% compliance to voluntary agreement).
- It was up to ACE holders to trade ACE if they wanted to catch in only 1 or 2 zones (so the total ACE coming out of each zone was maintained).
- In 03/04 we altered the % of ACE coming off each zone to better reflect what we had learnt in 02/03.
- We have continued with this ACE % since 03/04.



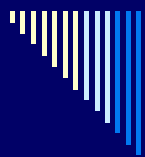
## ACE (Tonnes / zone)

		02/03	03/04	04/05	05/06
A	Clarence to Hapuku	25,650	29,000	29,000	29,000
B	Hapuku to Conway	15,600	19,000	19,000	19,000
D	Conway to Waipara	20,000	23,500	23,500	23,500
E	Waipara to Waitaki	30,200	20,000	20,000	20,000



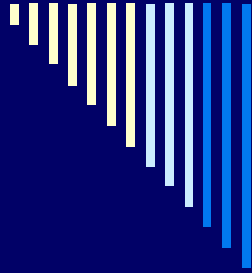
## The success.

- The northern zones have benefited from the reduced fishing pressure.
- This year the market and weather conditions dictated that we had to catch when and where we could so more effort went into the A & B zones.
- The fishery stood up to this extra effort (the reduced effort over the last 3 seasons was like money in the bank).
- Catch rates are reportedly 100 kgs/diver/per day higher than in 2001/02



## The future

- The voluntary subdivision has been rolled over again for the 2006/07 season (no discussion at the AGM – just 100% unanimous support).
- The success of the voluntary subdivision has given us the confidence to look at other management initiatives.
- At our recent AGM it was agreed to implement a voluntary size limit increase to 127mm in zones A & B for the 06/07 season and to look at raising this to 130mm for the next season.



*“We're still not where  
we're going, but we're  
not where we were”.*

~Natash Jasefowitz

---