

Whaia te pae tawhiti kia tata  
Whaia te pae tata kia mau!

## SURF CLAMS ON THE EAST COAST

### Starting from Scratch



Presentation by AFL to  
Paua Industry Conference 2006



## What are surf clams (NZ species)



*Spisula aequilatera*  
Triangle shell (SAE)



*Dosinia anus*  
Ringed Dosinia (DAN)



*Bassina yatei*  
Frlly Venus shell (BYA)



*Macra murchisoni*  
Large trough shell (MMI)



*Dosinia subrosea*  
Silky Dosinia (DSU)



*Paphies donacina*  
Deep water tuatua (PDO)



*Macra discors*  
Small trough shell (MDI)



## Background

- Developmental Fishery
- Introduced to the QMS 2005/06
- TACC's set low to reflect development status
- Crown has tendered off these rights
- AFL on behalf of its Iwi shareholders has acquired a significant stake
- AFL now wants to develop the fishery



## Distribution

### Species

*Bassina yatei*

*Dosinia subrosea*

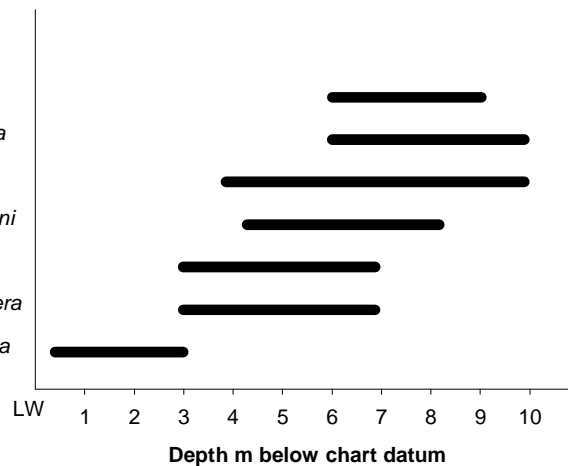
*Dosinia anus*

*Mactra murchisoni*

*Mactra discors*

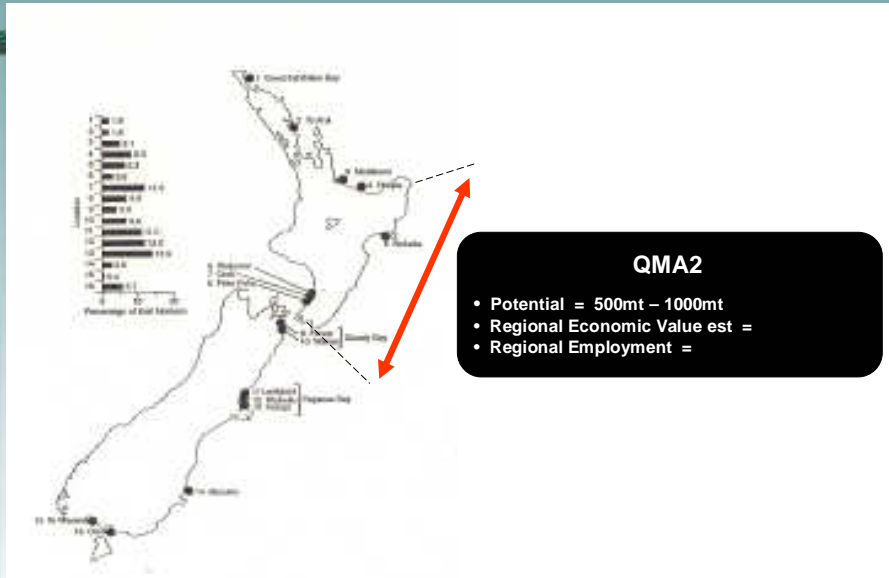
*Spisula aequilatera*

*Paphies donacina*

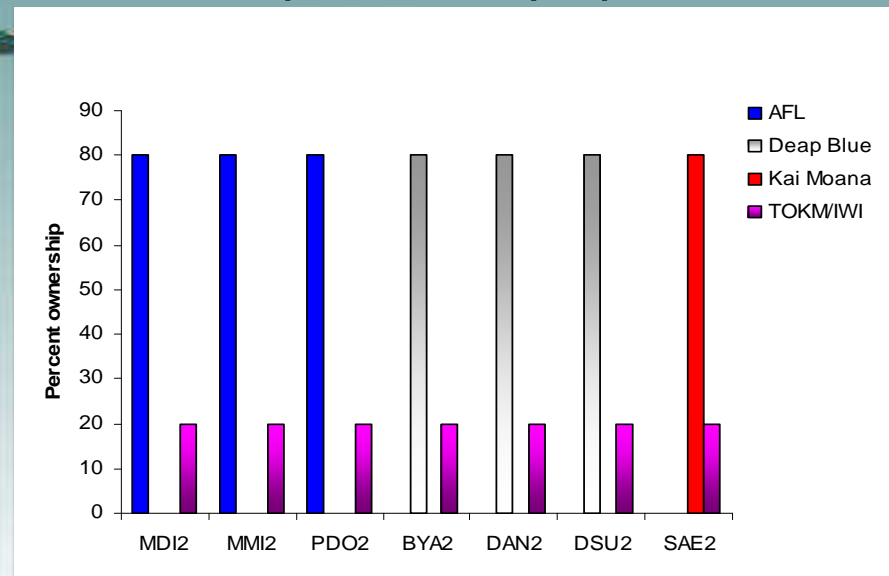




## Preliminary Views of Fishery Size



## Ownership Share by Species



## Strategic Approach

- Management strategies to be applied
  - Early development of management goals and strategic research plan
    - Harvest according to research plan
    - Logbooks to record data for monitoring recruitment and abundance
    - Fleet control through harvest contracts
    - Small spatial scale management
    - Environmental effects of fishing monitored
    - Developing stock assessment models for yield estimation and to provide predictions
    - Rotational fishing
    - Closed areas
  - In parallel develop a strategic marketing plan

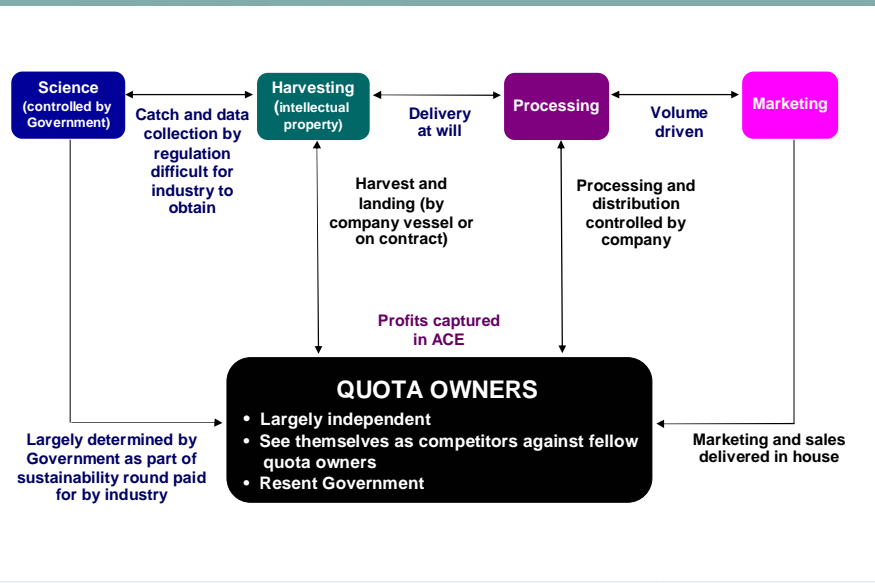


## Research for Management

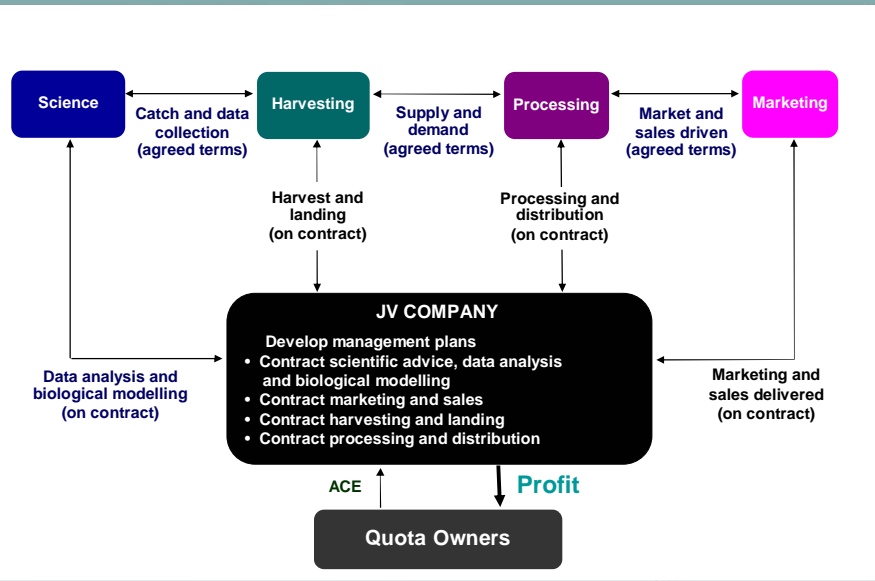
- Assisting in the development of new technologies and techniques
- Information for development and evaluation of fishing technologies including new hydraulic dredges
- Assist in the development of depuration techniques for areas with water quality issues
- Identify key live handling techniques and transport requirements



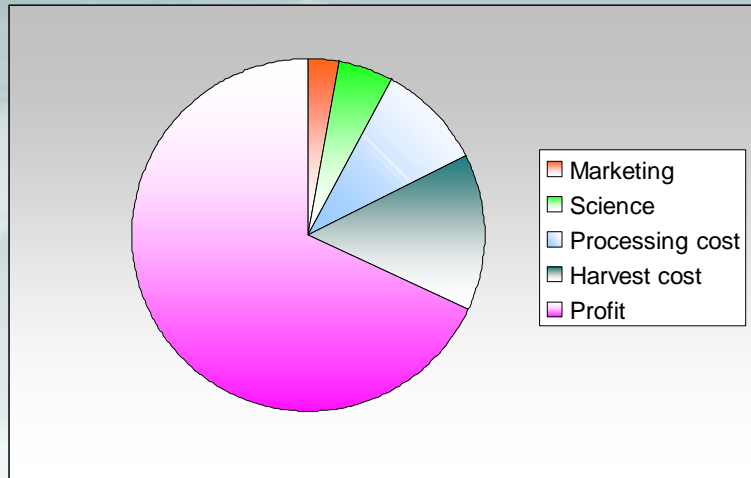
# Current Management Model



# Proposed Model



## Value of ACE (resource rent)



## Outcomes

- Under the proposed model –
  - Stakeholders provide information more freely for better and more informed management decisions
  - Greater “buy-in” for all decisions by internalising rules
  - Improved compliance
  - Service delivery would become more efficient
  - Improved quota value would provide surety for long-term planning for projects and research



## Outcomes

- The proposed model –
  - Induces industry ownership for all management decisions
  - Encourages technological innovation to manage environmental, biological and economic concerns
  - Reduces industry's general resistance to responsive change
    - Including the TAC/TACC setting
    - Deemed values (landing fees)
    - Spatial closures
    - Protected species protocols



## Work Programme now underway

- Preliminary dredge survey for sanitation boundaries
- Undertake water sanitation programme (estimated 12 months)
- Undertake exploratory fishing against agreed research plan to identify
  - Location / density
  - Size / frequency
  - Monitor survival of returned clams
  - Monitor benthic effects
- Introduce rotational harvesting programme





## Approach to Date

- AFL has –
  - Commissioned a preliminary assessment paper from NIWA
  - All quota owners support the proposed model
  - Held meetings and discussions with quota owners to agree constitution
  - \$400k development budget and voluntary levies
  - Met with MFish officials to discuss approach (add surf clams to Schedule 6)

